

**PROPOSED DEVELOPMENT AT BISHOPTON LANE, STRATFORD-UPON-AVON
TRANSPORTATION BRIEFING NOTE
OUR REF: AB/TR/20459 – JUNE 2015**

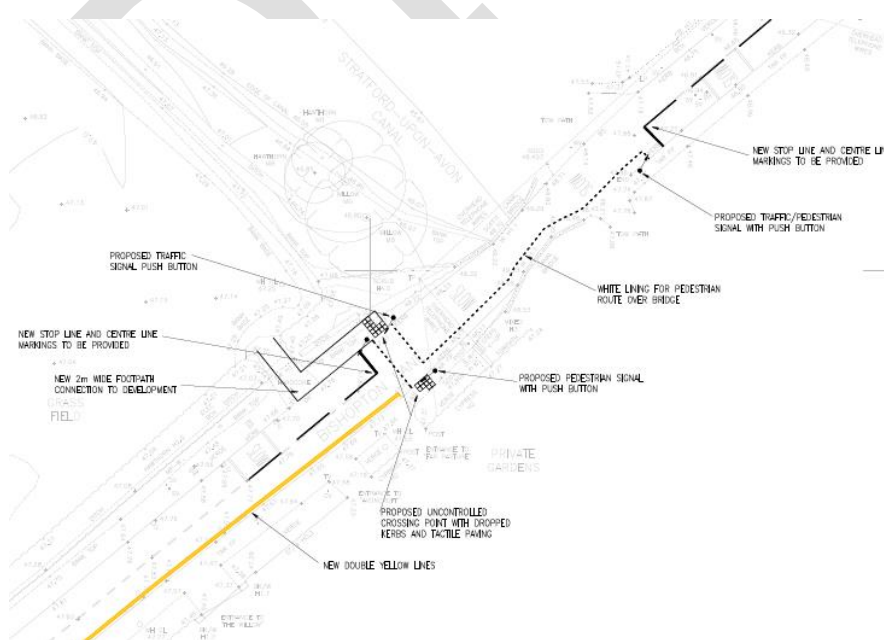
This briefing note provides a summary of the highways and transportation work undertaken to date for a proposed residential development at Bishopton Lane, Stratford-upon-Avon. A detailed Transport Assessment and Travel Plan is being prepared to support the proposed development at Bishopton Lane and this has been scoped with both the local highway authority (Warwickshire County Council) and Highways England.

The proposed development site lies adjacent to the A46, Bishopton Lane and The Ridgeway. Access will be achieved through one access point from The Ridgeway (T-junction) and two access points (T-junction and roundabout) from Bishopton Lane. No vehicular access is proposed to/from the A46.

Traffic impact from the proposed development has been assessed using the Stratford-upon-Avon transport model held by Warwickshire County Council to predict trips from the development across the local and strategic highway network. The results of this modelling have indicated improvements are required at the following locations:

- A46 Bishopton Island
- Timothy's Bridge roundabout
- Bishopton Lane canal bridge

The existing Bishopton Lane canal bridge is narrow with a blind summit and has limited access for pedestrians. An improvement scheme has been agreed in principle with Warwickshire County Council whereby shuttle traffic lights will be provided to control the flow of traffic over the bridge as well as providing a dedicated on demand pedestrian phase to enable pedestrians to use the bridge free of traffic. The design plan shows the current concept for the proposed shuttle signals:



The development is located in a sustainable location with existing bus services close by along The Ridgeway (no. 229) and Bishopton Lane (no. 19). The site is also located close to the Stratford Park and Ride and Stratford-upon-Avon Parkway railway station, which provides regular services to Birmingham and London. Improvements to local bus services will be facilitated by the development by providing appropriate contributions and this has been discussed with Warwickshire County Council.

There are existing footways and cycleways along Bishopton Lane, The Ridgeway and alongside the canal, which forms part of the National Cycle Route network. These provide access to employment places, schools, shops and other leisure facilities. Improved links will be created from the development along with enhancements north of the canal bridge towards the Parkway station.

Sustainable transport measures will be provided to encourage sustainable travel. This will be illustrated within the Travel Plan where, information surrounding bus routes/timetables, cycle routes and rail times can all be found to provide residents with informed choices on their different modes of travel. The Travel Plan will be provided to encourage walking and cycling to and from the development, with secure cycle parking made available to users. Suitable improvements to the highway network will be made to further encourage cycling.

Measures to reduce car dependency will also be highlighted within the Travel Plan and implemented within the site. Home working will be encouraged with the use of home broadband and with appropriate space available.

Subject to any necessary improvements required following the completion of the Transport Assessments, there are no constraints to development of the site in Highways and Transportation terms.